

Arrival at the Institute of Microelectronics of Barcelona (IMB-CNM, CSIC)

The IMB-CNM facilities are located on the campus of Universitat Autònoma de Barcelona (UAB), belonging to the population of Cerdanyola del Vallès (08193), Catalunya.

The exact location is:

**Carrer dels Til·lers, s.n., Campus of the Universitat Autònoma de Barcelona
08193, Cerdanyola del Vallès (Barcelona)**

Access routes:

Public transport access routes:

- **Ferrocarrils Generalitat de Catalunya (FGC)**, line S2 to “Universitat Autònoma”.
- **Rodales Renfe**, lines R7 and R8 to “Cerdanyola-Universitat”.
- **Bus**, lines e3, 648, N62, L15 and L277 to “UAB Ciències/Biociències”.

Private transport access routes:

- **Exit 21** of Autopista del Mediterrani (AP-7).

Building identification

The logo of the center is on the main façade (c/ dels Til·lers) of the building:

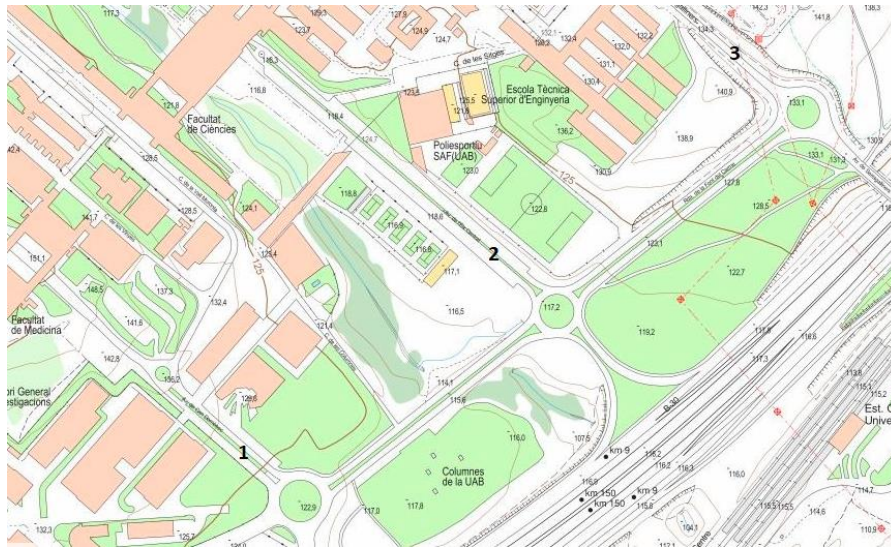


IMB-CNM building:

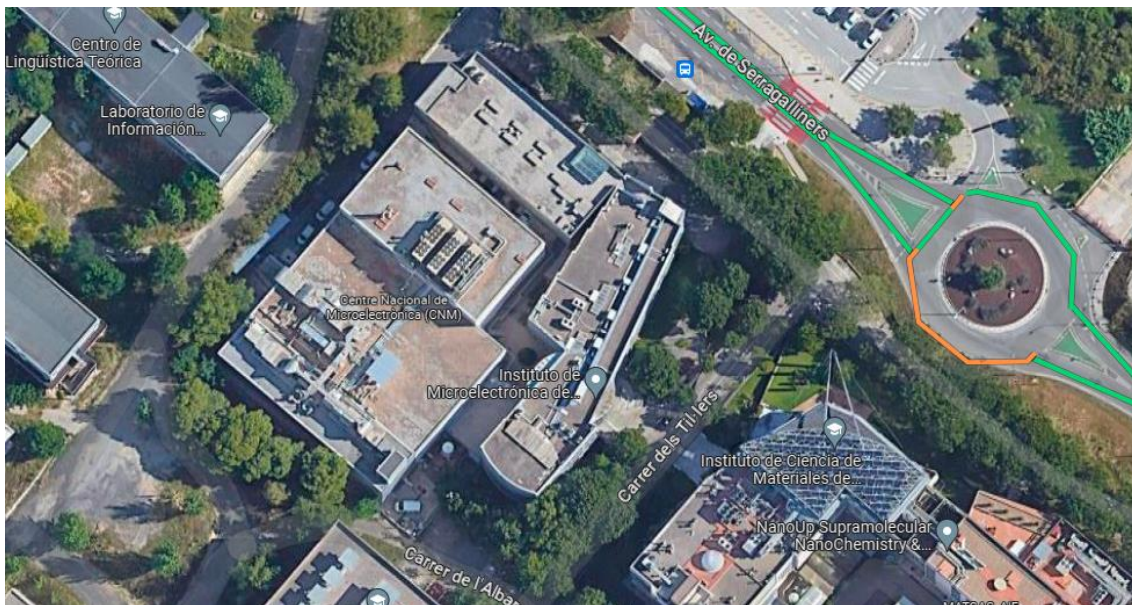


Localization

The UAB campus is separated by three major avenues. From left to right they are: Avinguda de Can Domènec (1), Avinguda de l'Eix Central (2) and Avinguda de Serragalliners (3).



The entrance to the building is on the **Til·lers street**. The facilities of the IMB-CNM are located between this street and the Avinguda de Serragalliners (3). On the other side of Serragalliners is a UAB public parking.



Some of the nearest facilities are the **Cerdanyola del Vallès fire station**, the **Faculty of Philosophy and Letters**, the **Barcelona Institute of Materials Science (ICMAB-CSIC)** and a big asphalt parking.